

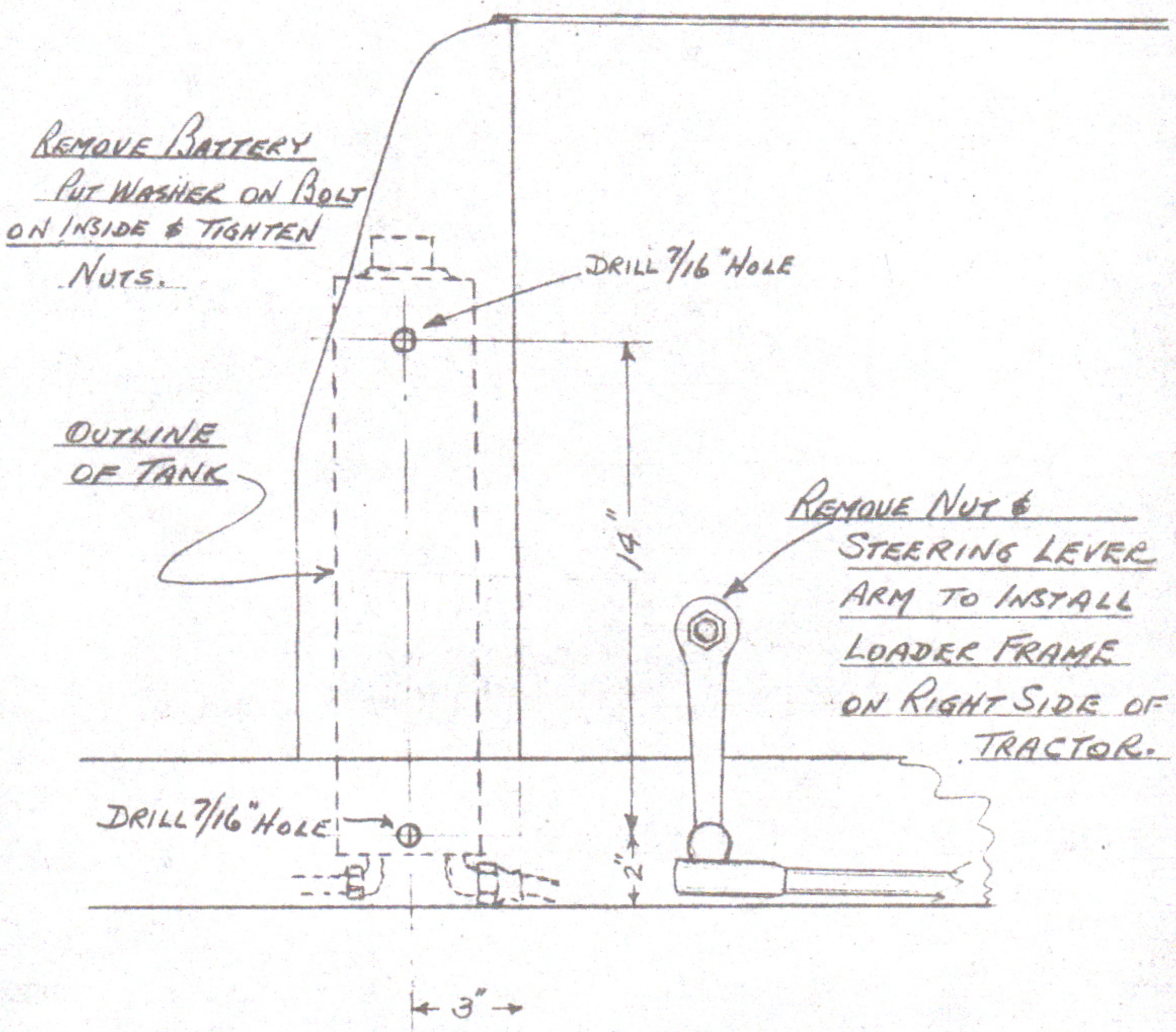
INSTALLATION INSTRUCTIONS FOR
EARTHMASTER FRONT END LOADER MODEL 169

1. Install new oil reservoir as shown in diagram. This tank is installed on the outside of the tractor.
2. Remove $\frac{1}{2}$ " Suction line from Earthmaster tank and hose and replace with new $\frac{1}{2}$ " line supplied with Loader. Install new line as shown in diagram. Next remove $\frac{3}{8}$ " line from tank and valve of Earthmaster Tractor (this line runs from tank to lower forward port of the Hydraulic Valve). Install new $\frac{3}{8}$ " x 42" line supplied with loader as shown in diagram i.e. from the bottom forward port of the valve to the new tank. Install $\frac{3}{8}$ " x 36" line. This line is connected to either the side or rear top port of the valve, whichever is not being used by the rear hydraulic unit. Run this line back and under the rear axle so that it runs up the right side of the Tractor. Connect this line to the fitting on the "T". The $\frac{1}{4}$ " pipe connected to the "T" will then run crosswise beneath the tractor with the elbow fitting on the opposite end from the "T", facing forward. This pipe is clamped to the angle iron support running crosswise beneath the tractor. Connect one hose to the remaining open port of the "T" and the other hose to the elbow.
3. Install side frames as shown in diagram making sure that all bolts have lock washers and are securely tightened. If the forward slotted holes of the side frames do not line up with the holes in the tractor frame loosen the four bolts on each side of the axle housing next to the differential. Attach frame to holes in the drop plate as indicated in the diagram put nuts on loosely. Raise or lower the forward end of frame until slotted holes line up with holes in tractor frame. Tighten all nuts securely. Then tighten nuts on axle housing.
4. Install lift arms as shown in diagram using the $1\frac{1}{2}$ x 3 $\frac{1}{8}$ pins for fastening these arms to the side frames.
5. Install cylinders as shown using lower hole on lift arm for model C Earthmaster Tractor and upper hole for model C H Tractor.
6. Install trip using $\frac{3}{8}$ x 2 pin with cotter key. Install spring from back of trip to extension piece welded to channel cross member. Connect trip to lever arm hinge piece using the two connecting links and two pin with cotter keys.
7. Install trip handle as shown, to the welded bolt on the left side lifting arm. Connect the round bar with clevises on each end, between the trip handle and the trip hinge piece using pins and cotter keys.
8. Install bucket as shown. Using $\frac{3}{4}$ x 3 bolts to connect the bucket to the lifting arms as shown in diagram.
9. Remove plug and spring at bottom of valve and install new spring. This increases the oil pressure necessary for use of the Loader.
10. Install $\frac{1}{2}$ " Street Ells in cylinders so that their ports face inward at approximately 40 degrees. Install the union couplings of the hoses in these Ells. Connect hoses to union couplings.

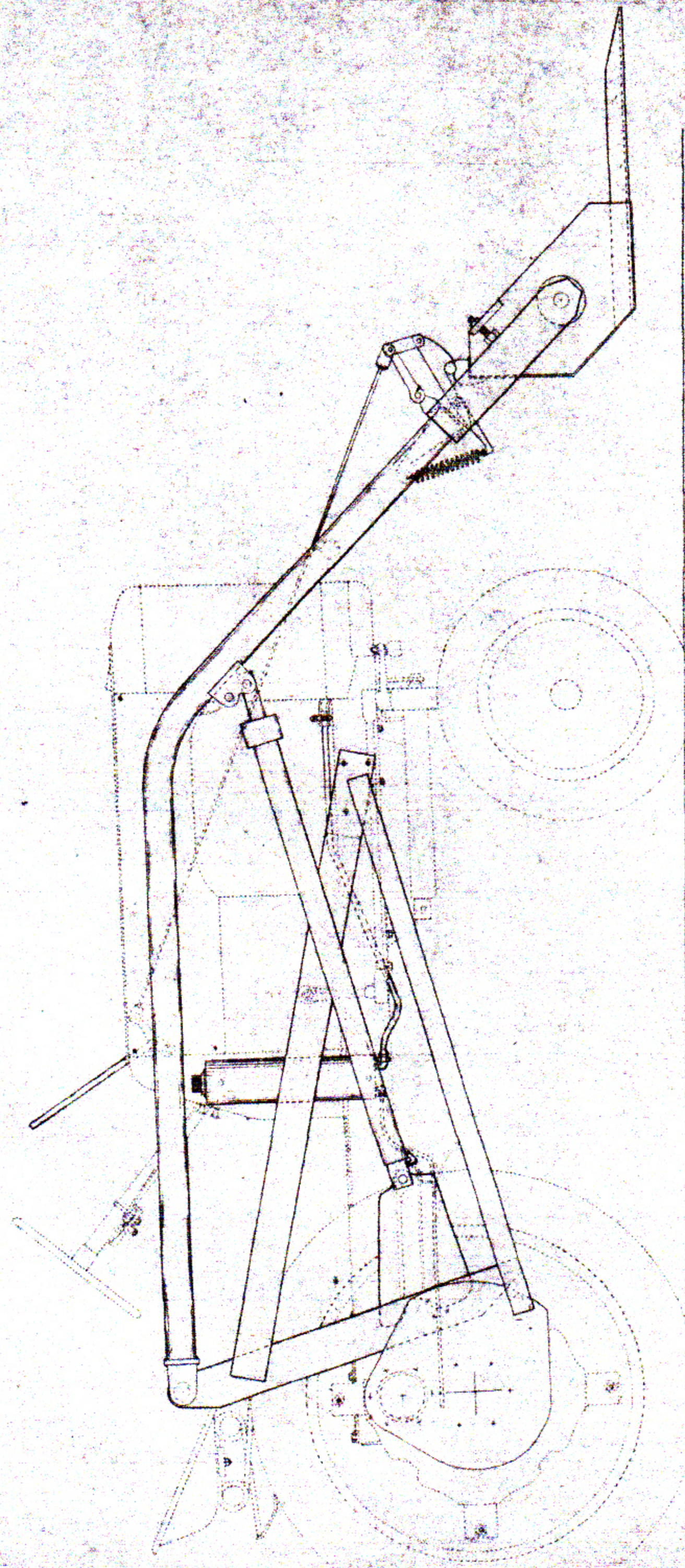
11. Fill oil reservoir with #20 motor oil. Loosen union couplings on hoses. Start the Tractor engine and lift valve handle, this will force oil into the cylinders. Continue holding handle in raised position until oil runs freely from the hose couplings. Release handle and tighten couplings. This will bleed the air from the cylinders. Raise valve handle again, this will raise the Loader about halfway. Depress the valve handle and drop Loader to ground, add more oil to the tank until the oil level is approximately 3 inches from the top of the tank. This is a necessary procedure inasmuch as the cylinders are of the displacement type and hold at all times a quart of oil when the loader is in a down position.

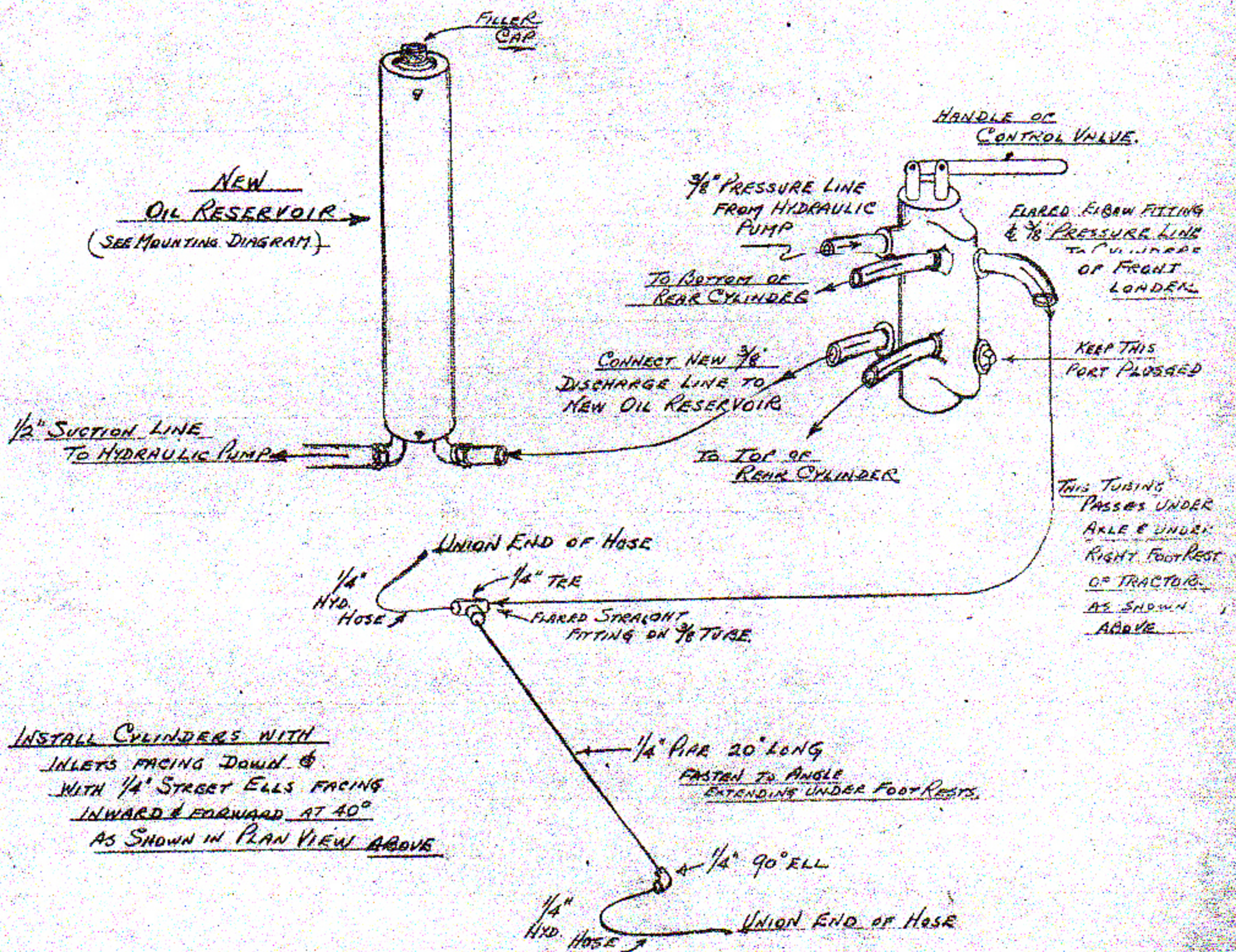
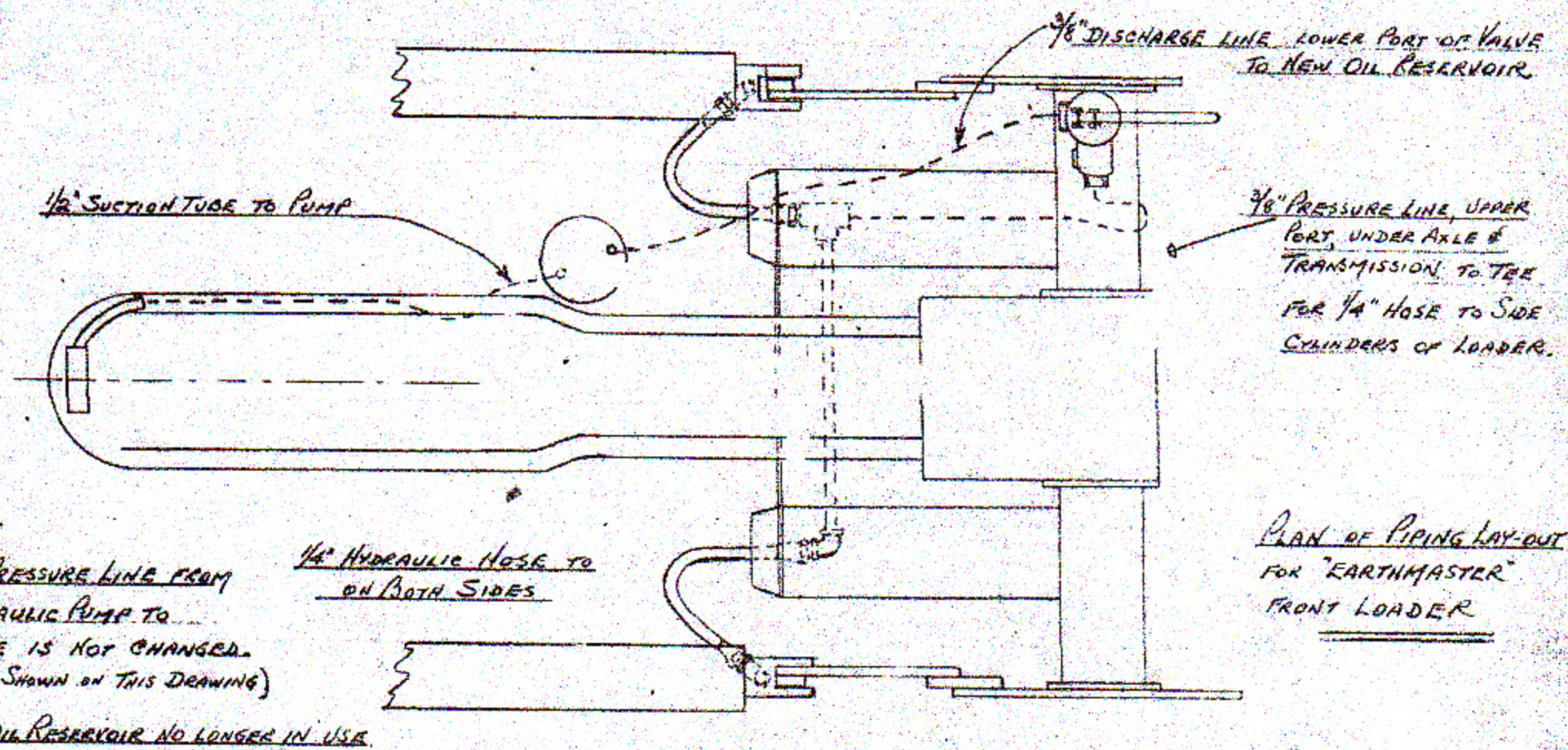
The Loader is now ready for use.

DIAGRAM FOR
LOCATING OIL-RESERVOIR
FOR FRONT LOADER ON "EARTHMASTER" TRACTOR
ON RIGHT SIDE OF TRACTOR.



WHEN INSTALLING FRONT LOADER THE INSIDE OIL TANK IS DISCONNECTED & NO LONGER USED. THEREAFTER THIS NEW LARGER TANK IS USED EVEN SHOULD LOADER BE TAKEN OFF TO USE TRACTOR FOR OTHER WORK.





INSTALLATION DIAGRAM FOR HYDRAULIC LINES OF "EARTHMASTER" FRONT LOADER.